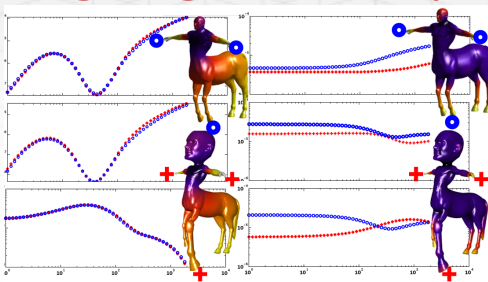


Theory of non-rigid geometry

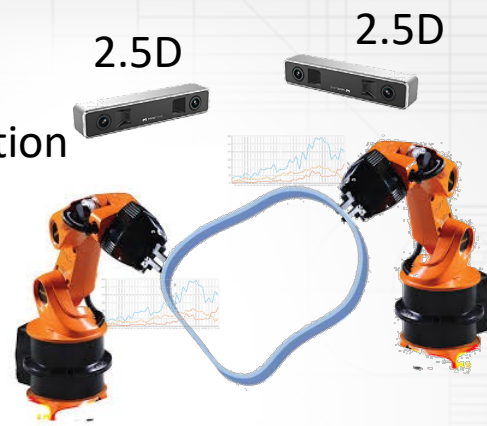
- Scale free features
- Affine metrics
- Learned invariants



$$q_{ij} = |K_G| g_{ij} \quad h_{ij} = |K^q| \frac{\tilde{q}_{ij}}{\det^4(\tilde{q})} = |K^q| q_{ij}$$

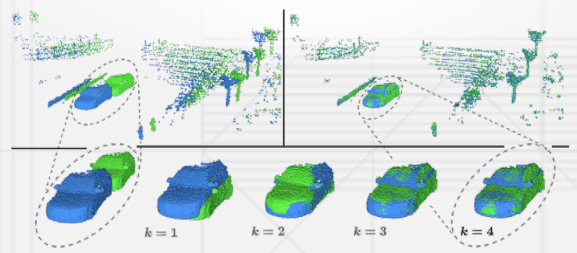
Soft - Robotics

- Non-rigid Object recognition
- Depth sensing
- Localization

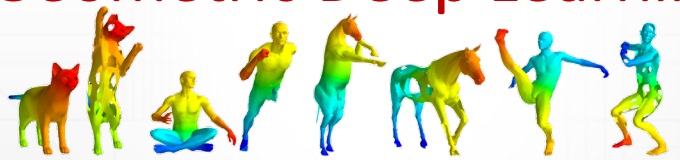


Autonomous Driving

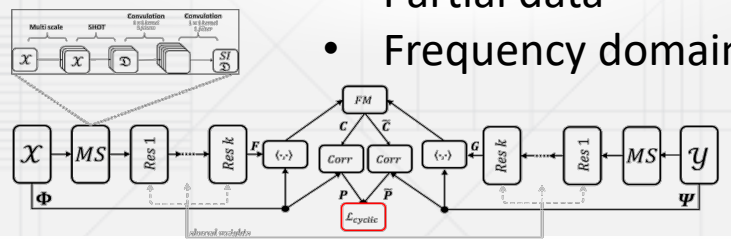
- Scene Flow
- Graph unrolling
- Deep Learning



Geometric Deep Learning



- Stretchable structures
- Partial data
- Frequency domain



Medical Imaging

- Soft tissue analysis
- Cardiac cyclic
- CT / Ultrasound

